



Cleveland State University



L. B.
President



P. F.
Chief of Staff



M. B.
Interim Vice President,
Research



N. S.
Provost and Senior Vice
President, Academic Affairs



D. J. W.
Senior Vice President,
Business Affairs and
Chief Financial Officer



D. D.
Associate Vice President,
Human Resources



S. W.
Vice President of Legal Affairs
and Compliance, General Counsel
and Board Secretary



J. R.
Vice President, Advancement and
Executive Director, CSU Foundation



K. G. H.
Vice President and Athletics
Director / Deputy Athletics Director,
Student Athlete Experience



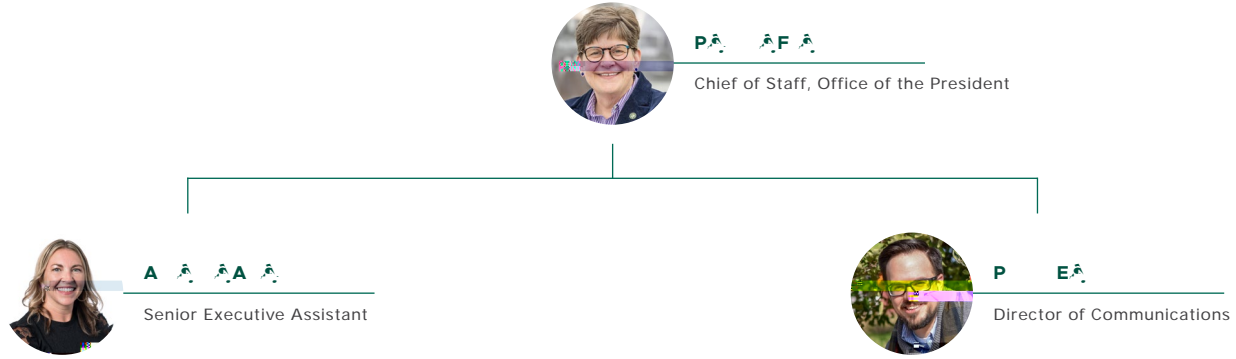
T. B.
Vice President, Student
Belonging and Success



R. G.
Vice President/Chief Marketing
and Communications Officer



C. C.
Executive Director for
Government Affairs and Special
Assistant to the President





N . S .
Provost and Senior Vice
President, Academic Affairs



M . A .
Chief of Staff



J . G .
Dean, Levin College of
Public Affairs and Education



A . W . K .
Dean, College of Arts
and Sciences

M . G .
Dean, Monte Ahuja
College of Business

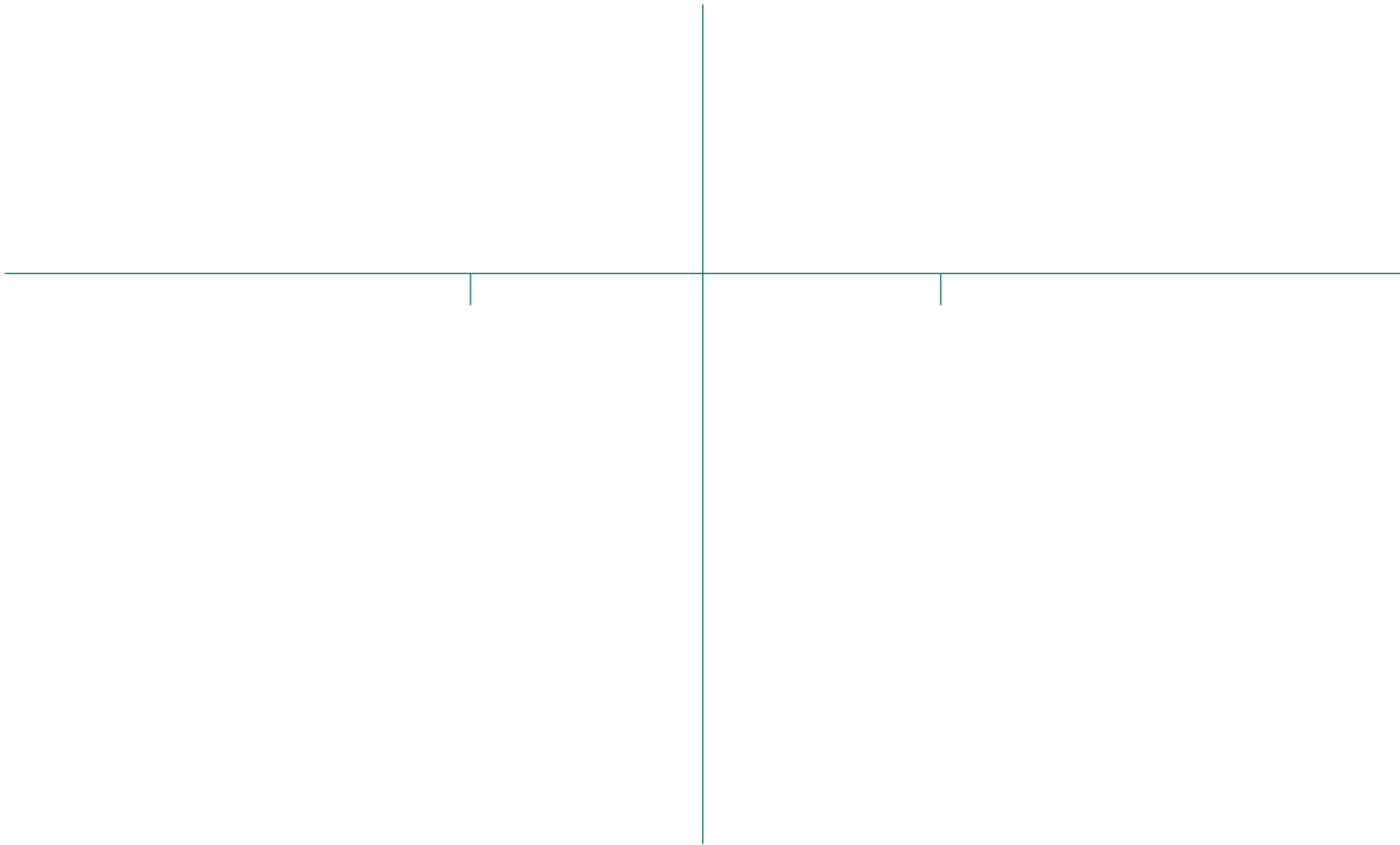


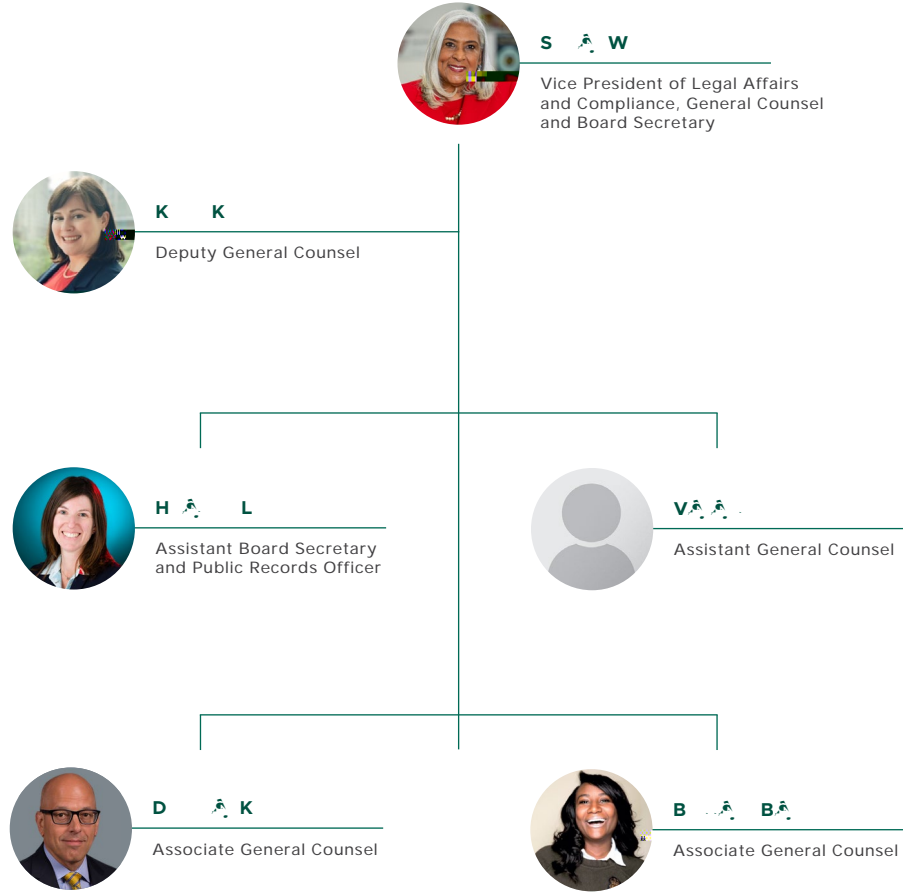
R . S .
Dean, Washkewicz College
of Engineering



Dr. J. W.

Senior Vice President, Business Affairs
and Chief Financial Officer





A - M - C

Associate Vice President,
Alumni Relations and Corporate



J P

Assistant Vice President, Finance &
Administration, Assistant Treasurer,
CSU Foundation



K G H.

Vice President and Athletics Director / Deputy Athletics Director, Student Athlete Experience



A D P -M

Assistant Athletic Director Administration



E M.

Associate Athletics Director Compliance



C B.

Deputy Athletics Director External Operations



D. R.

Head Coach Men's Basketball



C K

Head Coach Women's Basketball

M - S.A.

Manager, Administrative
Operations

